



EVENT REMINDER

Holiday Party 12/8

Santa comes to
Washington Square!
1-3 p.m.
1111 E. Washington



Tom Lutz

Message from Tom Lutz

President, Washington Square Neighborhood Association

A 501(c)(3) in Santa Ana, California

The Bristol widening project is scheduled to start soon amidst much controversy. I wrote an article in the July Newsletter about the project where I and some others in WS attended a meeting where we were led to believe the section between Civic Center Dr. and 17th Street was to be green space as it is south of First Street. Just recently we have found out this may not be the case and it may possibly be sold off for commercial development. The existing business owners have formed a coalition to attempt to and keep their buildings and are lobbying the city to do so. We organized a special meeting Nov. 5th with WS residents to learn more and ask questions on this project. In attendance were the Mayor, new City Manager, our Ward Council Member, the City Public Works Director as well as the city Project Manager. Also in attendance was the Coalition spokesperson and their architect.

The next day, at our November board meeting we formed an ad hoc committee to address the widening project to address our concerns to protect and benefit our Louise St. residents, as well as all of Washington Square. Issues to be discussed are: green space, a sound wall, right turn lane on Washington, enhanced entrances to the neighborhood, type of businesses and operating hours, etc.

But wait! There's more. Now we have learned Santa Ana College has purchased the vacant land at 17th and Bristol. I spoke with President Dr. Erlinda Martinez and they are tentatively planning on an interim parking lot for staff until they develop a master plan for its use. She has agreed to keep WS in the loop as they proceed. The ad hoc committee is being headed up by Louise St. block reps, Randy & Tracy Simons and Bobi Keenan. Please contact me or the committee heads if you are interested in sitting on this committee. This is an important issue to the neighborhood and we can use your input. Many voices are hard for the City to ignore!

On a brighter topic, were did this year go? It seems just yesterday I was with a great group of our neighbors at the Progressive Dinner in March. Then there was our always successful Wine Walk May 18th hosted by three of our Louise St. residents, and just last month our 2nd Annual Oktoberfest headed up by our own Frau Diane Morter. If you missed any of these you missed out on a lot of fun with neighbors, prizes, and good eats. But, you can always visit our WSNA website (washington-square.org) to relive them by webmaster David Jirik and his capture of the magic on film. But wait! We're not done yet. December 8th brings our MOST FAMOUS visitor back to the neighborhood! You know who he is--the big guy in the red suit and white beard who rides in on a fire truck to have his picture taken with all the good boys and girls in the Square. So save the date for cookies and Santa Claus, Sunday December 8, 1pm at 1110 W. Washington Ave.

We had a lot of fun this year and we still had lots of projects like dumpster day, neighborhood clean up where volunteers painted out the poles and backs of the street signs along 10th Street. Yet, no sooner had we completed sprucing up those signs, the City came thru and changed some out. That is why you see some painted black and others with the aluminum shiny backs. We could use some help catching up and getting those new signs painted black. If any of you can volunteer to paint out a sign or two we'll supply a can of spray paint. Just contact me and we'll set you up.

In closing I would like to wish you all safe and happy holidays as we get ready for 2014.

Tom Lutz

Tom Lutz
2013 President

in this issue--

Alan Anderson Award
p.3

Updates on Bristol
Street widening project
pp. 1 and 4

Santa Ana Pony
League Signup Info
p.10

Washington Square is *Fun!*

Oktoberfest recap

The Washington Square Oktoberfest can now claim that it changes lives. It seems a number of Festers were strictly wine affectionados before entering. However, upon enjoying the evening and tasting with an open mind, they left otherwise. The breweries involved are thrilled with this news and the Oktoberfesters are already signed up for next year.

Most important, the hosts are wonderful. Diane Morter, the Oktoberfest Committee, the WSNA Board, and the Oktoberfesters, all appreciate the generosity of the Nava family in lending us their wonderful back yard for the event. So a big thank you to Carlos, Brandie, Charlie, Tyler, Madison and the two black labs, Lucky and Jack, for letting us inconvenience you. You win the "neighbor of the year" prize.

If you were there, and a lot of you were, here's the recap based on feedback we've heard:

- Beer selection was great, and plentiful
- The DJ is a party animal and kept things rockin'
- Pourers were very fun--and generous
- Games were off the hook
- Loved the photo ops
- It's wonderful to relax and enjoy our neighbors
- Food was delicious
- And last: The Chicken Dance!

What more could you want? More photos in the Oktoberfest gallery on www.washington-square.com.



Two handsome, well-dressed Oktoberfesters, Don and Carlos.



Gracious homeowners, Carlos and Brandie Nava.



WTH? This photo needs a caption. Why does Javier have a bucket?

Obviously it takes a village, and Washington Square is lucky to have a fabulous and growing cadre of volunteers at the heart of our neighborhood.

Thank you all for stepping up,



George says:
A big thanks
to all!



The Washington Square Neighborhood Newsletter is published quarterly by the Washington Square Neighborhood Association. WSNA is a non-profit mutual benefit community association established in 1985. WSNA is an officially recognized neighborhood by the city of Santa Ana, California. Currently the volunteer Newsletter Committee is chaired by Jean-Louise Jirik who gets a lot of help from you. If you have suggestions or story ideas, you can email her at jljirik@heliotrope-studios.com

Alan Anderson Award goes to...

Rob and Deidre Moffat

920 North Louise Street



Proud owners Rob and Deidre Moffat pose in front of their prized Canary Island Palms.

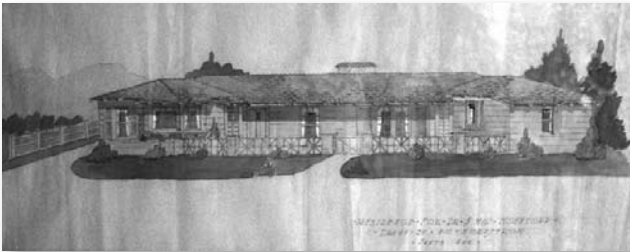
The Alan Anderson Award is presented to residents of a selected Washington Square home that exemplifies Alan's love, pride and care for his home, neighbors and neighborhood which contributes to Washington Square's sense of community and positivity.

Congratulations to Washington Square's newest couple to receive the accolade for a beautifully improved and cared for home. Rob and Deidre Moffat at 920 North Louise's home is known for the four massive palm trees in front.

The palms are stunning specimens of the Palm Phoenix *Canariensis*, commonly known as the Canary Island Date Palm and the most expensive palm trees in the world. In fact, the Moffats' trees are worth roughly \$10,000 apiece--not that they're looking to sell. The trees are lovingly maintained as the focus of the front yard. Hardscape includes a wall and long porch with other tropical plantings to complete the look.

Married for over 10 years, landscape architect Rob, an Ohio native, met his beautiful wife Deidre, a California native, when she cut his hair the first time. On that day, Deidre, a hairstylist at Hue, gained a lifetime customer--and more. Rob and Deidre now share their home with Brutus, their English Bulldog with a big personality.

Deidre and Rob love Santa Ana and what it has to offer. Their social life and outside interests revolve around the opportunities available in the city and they have tons of friends in Washington Square and nearby neighborhoods.



Brutus, (center) the king of the castle, poses here with his two loyal subjects.

As only the third owners of their house, they are maintaining it true to the period. Here (left) is the original architect's elevation for their home which was built in 1936. A recent bathroom renovation restored the room to its original look--including sourcing and actually finding the original tile.

The Moffats have become fixtures in the Washington Square neighborhood and city of Santa Ana. They are currently active on the Tree Committee and the Bristol Widening ad hoc committee. We all benefit from their time and boundless energy. Thank you!



Brutus, (center) the king of the castle, poses here with his two loyal subjects.



*One of many perfect bird of paradise blooms. This one is shown in front of the textured background of the trunk of a *Canariensis* palm.*



Bristol Street Widening Project issues potentially threaten property values and quality of life in Washington Square.

by Tom Lutz and Jean-Louise Jirik

Bristol Street widening is a hot issue with some potentially detrimental outcomes if we do not react now. The project is from Civic Center to 17th and directly impacts the whole neighborhood, Louise street residents in particular.

What we know for sure about Bristol Widening Project:

Funding for Bristol Widening project has been decreased.

The original plans called for greenspace with sycamores and a sound wall, **not commercial development**.

At some point these plans were changed without notice to Washington Square board or residents. Long term residents are adamant about remembering the greenspace in the original plan.

At the minimum Washington Square asks for the following Civic Center to 17th:

- Sound wall of the proper height and material for entire length of project.
- Plantings on sound wall, facing Bristol, to further reduce sound and discourage graffiti.
- Trees along Bristol, to further reduce sound and to visually connect with the length of Bristol.
- Right turn lane on Washington at Bristol to alleviate stacking and long wait times for residents turning onto NB Bristol.
- Demolish and remove unsightly, unkempt residential buildings.

Eight business on the Washington-17th stretch have formed a coalition which is lobbying the city to let their buildings remain. The businesses have drafted a plan to reface buildings, reconfigure land use, signage and landscape. However, if the city does NOT approve the variance in planned street width and takes entire lots rather than just frontage; the discussion with the business owners' coalition is a moot.

So what we know is that we don't know....yet. But here is **what we know about the 8 businesses in the coalition who are attempting to save their buildings.**

- The businesses have diverse architecture and color schemes
- The businesses have diverse "landscaping"
- The businesses have a long history of non-involvement with us, and a history of deferred maintenance of their properties.
- The businesses do not have a financing plan to cover cost of the extensive improvements and refuse to disclose options.
- Grant monies are not available for projects of this type.

Progress: At a meeting November 5 which was attended by Mayor, City Manager and other "players," some promises were made. Mayor Pulido promised the sound wall (He is on OCTA board and can monitor the project) and residences WILL be demolished. Jason Gabriel is Project Manager and said a right turn lane can happen. Mayor Pulido also stated that utilities will be buried. Please get involved. Email Tom Lutz to do so.

Aggressive personal injury representation
for persons injured as the result of:

- ◆ Auto Accidents
- ◆ Commercial Truck Accidents
- ◆ Business Premises Negligence
- ◆ Physical Violence and Sexual Attacks
- ◆ Dog Bites

All cases taken on a contingency fee basis.

THE ACCIDENT INJURY LAW ◆ CENTER

Call Now at xxx-xxx-xxxx
for a free consultation.

Moses Yneges, Attorney at Law
and Washington Square resident

Sarah's Neighborhood News

homes for sale

	Beds	Baths	Square Feet	List/Sold Price	DOM	Sale Type
1308 N. Flower	3	1	1467	399900	167	Standard
1316 N. Olive	3	1	1448	329900	50	Short sale
1007 N. Lowell	2	1	943	417000	4	Standard
1308 N. Louise	3	2.5	1475	549900	48	FLIP
1315 N. Louise	6	2.5	2673	559900	130	Standard

in escrow/pending

827 N. Bristol	2	1	1168	230000	42	Short sale
1426 Freeman	2	1	1386	399000	16	Standard
1151 Bomo Koral	4	2	1264	409000	105	Standard
1010 N. Towner 3	2	1	980	509000	70	Flip
1012 N. Olive	2	1	1066	447500	17	Standard

homes sold

Welcome to our new neighbors at:

1120 N. Towner	4	3	2000	580000	109	Flip
1010 N. Towner	3	2	1980	365000	148	Short sale
1105 W. 16th	3	2	1303	369000	22	Short sale
1023 N. Olive	2	1	998	417000	0	Standard
1515 N. Louise	3	2	1700	410000	1	Short sale

*The above sold statistics are for the time period June 1, 2013 through Nov 1, 2013. Compiled from information from the Social Multiple Listing Service and county recorder's office.

Yes, 2013 has been a rollercoaster of a year for Real Estate in Orange County and most of California. From January through July, we could not keep houses on the market for more than a day, when sellers were receiving 30+ offers on nearly every house for sale. The demand for homes was outpacing the supply by a large margin. Rates were at an ALL TIME LOW of 3.5%.

As July and August rolled around, home prices had gone up substantially (the law of supply and demand) and the interest rates had climbed to 4.75%, which knocked a large portion of buyers out of the market.

By September, sales had become sluggish, and the housing inventory had grown by 30%. Throughout the 92703 & 92706 zip codes, we were and continue to see price reductions. The good news is that for Washington Square, the lull lasted until October. Since October 1, we have seen 6 houses going into escrow (some have already closed) at relatively high prices. Two of those homes were "flip" properties on Towner, which had been on the market for months--selling over \$500K. And a few of the smaller 2 bedrooms have sold at high prices/square foot.

Thanks to the close knit community and the active neighborhood association, our neighborhood has continued to attract homebuyers that are excited to call Washington Square "HOME."

Last call...if you are thinking of selling and you feel your house is "under water," now is the time to consider a real estate consultation. The Mortgage Forgiveness Debt Relief expires December 31, 2013, and the likelihood of it getting extended is low. That means if you need to short sale your home, you may be liable for the deficiency to your lender, and may have a federal income tax liability for that deficiency.

Please call me if you have any real estate questions or concerns.



Sarah Covarrubias

*Building lasting client relationships
with honesty, integrity & consistency.*

714-928-1303

SarahCRealtor@gmail.com

www.theohomes.com





First in a series. Meet our trees.

Sycamore Trees

The tree lined streets of Washington Square are lovely and our trees help weave the fabric of the neighborhood. With the formation of the Tree Committee (see page 9) we are presenting a series of articles focusing on one of the species of tree we live with. This issue, it is the Sycamore.

You will find the large Sycamore trees along Freeman, Louise, and parts of Towner. The Sycamore tree is one of the most massive shade trees in America. Its mottled bark and large leaves are distinctive. Typically growing alongside streams and riverbeds, its nominal life span is roughly 200 years, although specimens are known to have survived 500 years.

Did you know that Sycamores require large amounts of water, and that the surrounding buildings and areas of pavement can stress large specimens planted in a cityscape? If you have one, you might want to make sure you're watering adequately.

Did you know there is more than one type of Sycamore tree and there are subtypes as well? The North American members of the genus *Platanus*. They are (1) *Platanus occidentalis*-American Sycamore, (2) *Platanus racemosa*-California or Western Sycamore, and (3) *Platanus wrightii*, the Arizona or Alamo Sycamore.

The dense, green foliage of the perennial sycamore tree (*Platanus occidentalis*) is perfect for adding shade or leafy lushness to a backyard or streetscape. Sycamore trees are one of the oldest species of trees on Earth, and are known for their longevity and hardiness.

Description: Sycamore trees produce large leaves that have a distinctive deep green. These plumes of leaves grow on trees that can reach



First Presbyterian Church Santa Ana

600 N. Main St.
Santa Ana CA 92701
714-542-7243
www.fpcs.com



Service Schedule:

Traditional Services @ 10:00 a.m.

*English service held in our main Sanctuary.

*Spanish service held in McFarland Hall

*Worship includes hymns & praise songs

"The Edge" Missional Fellowship
@ 11:30 a.m.

*Bible Study and Fellowship

*Held in Calvin Lounge

Sunday School and Nursery are
available during both hours.

We hope you will join us this Sunday!

up to 175 feet tall. As the leaves measure up to 6 inches long, a fully grown sycamore tree can be one of the densest trees in appearance. These leaves turn yellow in the fall, making for a beautiful touch of color at the end of the growing season. Small animals, such as squirrels, regularly make sycamore trees their home due to the warped, twisting branches.

Special Characteristics: Unlike most trees, sycamores are highly resistant to pollution and salty soils. They also stand up well in inclement weather, such as high winds and hail. The trees grow quickly, and are often used in urban areas as a source of shade, as they are tall compared to other trees.

Growing Requirements: Sycamore trees thrive in the U.S. Department of Agriculture plant hardiness zones 4 to 9. This includes all of the Western U.S., including California and Oregon. Sycamore trees are often found in areas where there is a lot of moisture, such as along areas of deep river banks, lakes and streams. These trees are not drought-tolerant, so it's important to plant sycamore trees in areas where they will always have water. The high growth period for sycamore trees is from the spring to late summer. Sycamore trees require a moderate amount of balanced fertilizer each fall for best growth.

Varieties: There are three distinct types of sycamore trees. The North American sycamore is most common in the U.S. and are known as the largest of the species varied bark colors, which range from gray-green to whitewashed. The Middle Eastern sycamore is found mostly in Eastern Africa and the British sycamore is native to Europe.

Guess Who is coming to Washington Square?

Pictures with Santa!

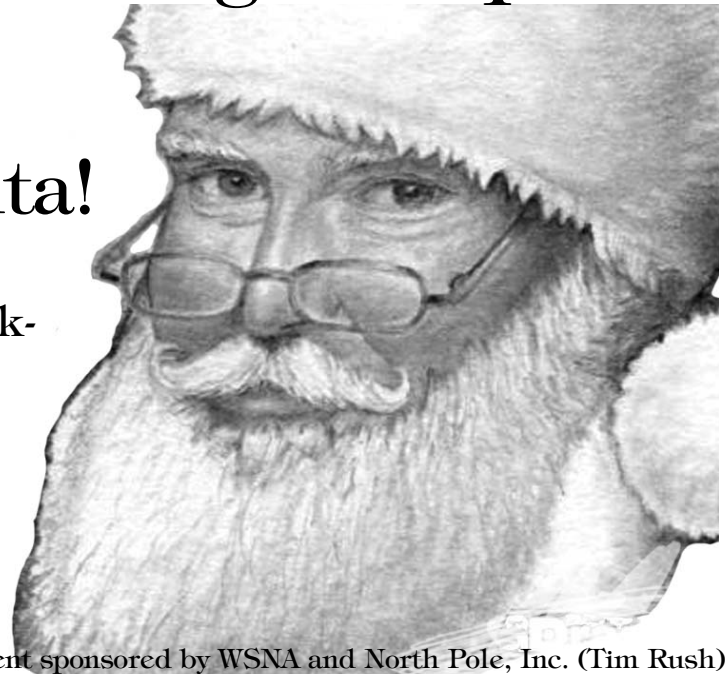
-Watch for Santa's Fire Truck-

Sunday December 8, 2013

1-3 p.m.

on the Front Lawn of
1110 West Washington
(between Westwood and Towner)

No charge for admission.



Event sponsored by WSNA and North Pole, Inc. (Tim Rush)

It's the season

Washington Square is
invited to our

FREE **THANKSGIVING** Taco Breakfast **PARTY**

El Pico de Gallo Grill
wants to thank our Wash-
ington Square neighbors
with tacos on the house.
We take pride in serving our
family of customers great
meals at reasonable prices.

So please join us for a
complimentary taco meal
before you put your
turkey in the oven.
Additional parking will be
available at the medical
center across Flower.

El Pico de
Gallo
GRILL

901 West 17th Street
Santa Ana CA 92706
714 953-7448

Thanksgiving Morning
November 28, 2012

Doors open at 7 a.m.. Close approx 10 a.m.
Party is over when the food runs out.
Modified breakfast menu available.

What's new?

in Downtown Santa Ana

Wendy Boelter answers the question: What's going on in Downtown Santa Ana?

NEW RETAIL...

Brooklyn Harper

210 East 4th Street, Unit A, Santa Ana 92701 (714) 667-7076

The trendsetting boutique Brooklyn Harper hosted their grand opening during the November 2nd East End Artwalk. Brooklyn Harper represents the young at heart and caters to the fashionably daring. Brooklyn Harper appeals to wild hearts with a passion for diverse, urban apparel.

THINGS TO DO...

1st Saturday Art Walk

The Artist Village and The East End in Downtown Santa Ana.

The Artist Village has 12-15 art vendors set up on the promenade the first Saturday of every month. Always in the mix you will see/hear live music-bands and djs. Dance group performances draw a large crowd; especially the break dancing groups that will take you back to the 80's! Don't forget about the galleries! GCAC, OCCA, the basement of the Santora and several other galleries are open to the public. The East End Art Walk expands beyond Santa Ana's traditional "first Saturday" art walk perimeter, extending into 3rd and 5th streets, and Bush and French streets in the heart of Downtown. The monthly event attracts local art lovers and destination culture seekers alike, who are invited to enjoy art displays and live music throughout the newly renovated East End District. Box Social has been a hit at the East End Art Walk. The 4,500 sq. ft. area consisting of concrete, rot iron, and wood has served as a blank indoor canvas for multiple artists, musicians, and photographers. Box Social is located next to Yost Theater at 305 North Spurgeon Street. Plaza Santana plays host to a great line-up of live local bands and artists. Left of the Dial Records located on French Street between 3rd and 5th also has live music set up in their store. Great crowd, great music if you like it loud!

The Big Draw @The Copper Door

225 1/2 N. Broadway, Santa Ana, California 92701

(714) 543-3813

Wednesday, November 13, 2013 8:30pm

The 2nd Wednesday of every month, The Copper Door in Santa Ana hosts an event called The Big Draw. This free event draws artists of all types to come hang out and get creative on 30-plus feet of communal drawing space. Featured artists also showcase their work at the event which makes it even more inspiring. Come check out The Big Draw for an opportunity to get in touch with other local artists and create some awesome art!

COMING SOON...

NATIVE SON ALEHOUSE Coming Soon to East End!

Native Son is a craft beer alehouse in Santa Ana, CA specializing in small craft breweries from SoCal, NorCal and Portland OR.

4th Street Market Coming Spring of 2014 to East End! Currently under construction!

The idea is to have a dozen small-scale restaurants that in a Mexican mercado would be called fondas, as well as coffee, beer, and wine. There will be kitchens for smaller-scale projects, like incubators for people whose business models are too large for the cottage food law but too small for traditional commercial kitchens; a gluten-free kitchen and a confectionery kitchen.

The market part will emphasize local artisans, including a butcher shop to be run by Michael Puglisi, a whole-animal butcher who moved west from Boston's Butcher shop and rose from in-house butcher to sous chef at Bouchon in Beverly Hills. Much of the food for sale will come from the commercial kitchens, and there will be a demo space as well.

Also coming to Downtown Santa Ana...

Bier Bar (summer 2014)

Eat Chow (summer 2014)

El Mercado (early 2014)

Playground Expansion (mid 2014)

Yojie Japanese Fondue (summer 2014)

New "Tree Committee" Formed

Aging trees are a problem. Especially when one falls on a house which is detrimental to home values, right? Not to mention a safety hazard for all.

Last month a large sycamore tree fell onto a house on Louise. It was a result of high winds and a diseased tree. Luckily the homeowner and her pets were not injured. The tree was located on the parkway, therefore owned by the city so the City of Santa Ana is responsible for removal and damage.

In addition some streets in the Square have bare spots where removed trees have not been replaced. Some streets have a mishmash of species of trees and many of the aging trees are diseased. Or all of the above.

Just a few weeks prior to the tree falling, the Board formed the Ad Hoc committee to research solutions and make recommendations to remedy the situations. This is going to be a long term effort.

If you have input or interest, the committee chair is Susan van der Roest (Susan@vdr.com). Currently they are doing a small survey so if you received a questionnaire, please respond.



Gardening with Facebook

You read it right. The Washington Square Facebook page, Washington Square Neighborhood Association, has evolved into a handy place where neighbors are sharing their produce with neighbors.

Backyard gardeners are able to distribute their extra produce by simply posting what they have, often with a photo. Interested neighbors post back and then things are left on porches for pickup. Some neighbors actually deliver their overflow crops.

So when you want to know what to do with that sudden abundance of zucchini, oranges, tomatoes and other garden bounty, think about posting on the neighborhood Facebook page. Your neighbors will love you for it.

Speaking of our Facebook page, you are invited to join. A lot of neighborhood info and comedy are posted as our numbers grow.

www.facebook.com/groups/wsnasantaana/



FUNNY PARTY RENTALS AND FLORIST

Friendly, on-time delivery and pickup of rentals. Convenient location adjacent to Washington Square. Se habla español.

We are family-owned and take pride in our equipment by maintaining it to high standards. We clean and sanitize every product before it leaves our warehouse.

- tables
- tents
- chairs
- heaters
- popcorn machines
- chafing dishes
- sno-cone machines
- balloons
- balloon decor
- helium tanks
- centerpieces
- party favors
- jumpers
- floral arrangements

FunnyPartyRental.com

1111 N. Bristol, Santa Ana
(just south of Washington)

Bus: (714) 569-1638
Cell: (714) 719-3639



Everything from the standard dozen to elaborate displays or tasteful bursts of color.

Funny Flowers is Washington Square's florist for all occasions--or just because.

Quincenieras
Weddings
Birthdays
Parties
Events
Showers
Prom
Plants
Quality cut flowers

Ask for Lupita or Christina
714-569-1638

1111 N Bristol, Santa Ana
www.funnyflowers.net

FUNNY FLOWERS

On the Website

The 2013 Boo Cam Video

A delightful stop-motion music video of trick or treating shenanigans and tomfoolery.

Hundreds of adorable kids whiz by in their chosen costume--some sweet, some scary and some downright perplexing. Only a minute and a half long and worth every second.

David Jirik of Heliotrope Studios outdid himself. Thank you David for another fun WSNA BooCam video.

Oktoberfest Photos

If you couldn't attend, you'll want to peruse the Oktoberfest photo gallery where you'll find your fun-loving neighbors being, well, silly.

You'll see the photo documentation of the evening so look for yourself and your neighbors.

There may be some opportunities for blackmail if you're looking for some extra income.

www.washington-square.org



Baseball! It's America's pastime so come one come all! Games are fun and the snack bar food is great--and all proceeds benefit the League.

The Shetland field is currently being renovated (finally) so players should find playing even more pleasant with games from January-May 2014.

Deadline to register is January 3 so register online 24/7 at santaanapony.com where you'll find all the information you need. All players registered online will receive a free helmet league decal.

In-person registration events are scheduled for Riverview Park (1817 W. 21st Street, Santa Ana)

Sunday November 17, 2013 10am - Noon
 Sunday December 1, 2013 10am - Noon
 Sunday December 15, 2013 10am - Noon
 Sunday December 29, 2013 10am - Noon

Now Enrolling 2 year olds

Potty training available



A traditional developmental curriculum
For Pre-School Children ages 2 to 6
 2, 3, or 5-day Programs Available
Open 7 am - 6 pm

Full and Half Day Preschool



Lic #304370274

714-547-5771

2112 E Santa Clara Ave.
 Corner of Tustin Ave & Santa Clara Ave

www.plumfieldschool.com

Your WSNA Block Representatives

Area 1 Louise North of Washington	
Randy & Tracy Simons	558-4871
Area 2 Louise South of Washington	
Bobi Keenan	953-9516
Area 3 Baker North of Washington	
Laura Ruiz	568-1660
Area 4 Baker South of Washington	
John McGuinness	836-1971
Area 5 Rosewood	
Josie Martinez	481-3871
Area 6 Westwood North of Washington	
Noe Vasquez	851-6767
Area 7 Westwood South of Washington	
Wendy Boelter	(949) 375-2485
Area 8 16th/Towner North of 15th	
Gil Melendez	542-3398
Area 9 Towner North of Washington	
Russ Bartlett	564-9080
Area 10 Towner South of Washington	
Victor Gomez	386-8249
Area 11 Freeman North of Washington	
Margaret Klase	972-8951
Area 12 Freeman South of Washington	
Juan & Virginia Bernal	836-7448
Area 13 Lowell South of Washington	
Christine Cwiertny	835-9464
Area 14 Lowell North of Washington	
Jon Wilson	550-0599
Area 15 Olive North of Washington	
Annette Arellano	483-0245
Area 16 Olive South of Washington	
Connie Major	547-7404
Area 17 Washington/Bomo Koral	
Tom Erwine	543-5802
Area 18 Washington St.	
Patricia Arroyo and Carlos Silva	721-8522
Area 19 10th between Westwood and Baker	
Cheryl Yarnall	542-7512

George's ODDS and ENDS

W.S. Veteran honored

Longtime neighbor on 10th Street and Westwood, Daniel Pena served in World War II and has been honored on the mural by Carlos Aguilar at Washington and Custer. Carlos is an amazing and dedicated artist. Expect to be moved when you see his stunning two-story mural.

Also featured is Loren Griset, the father of two neighborhood notables and one former Mayor.

Being good neighbors...

Is there a new neighbor or baby in the neighborhood? Please let us know so we can welcome them to Washington Square. Graduation? Wedding? We are also here for our neighbors in times of illness or loss. A sympathy card with heartfelt condolences and well wishes lets our neighbors know we don't only live in the same street, we care.

Washington Square has a designated hospitality position so please let your block rep or any of our board members know when we can share our unique neighborhood love with you and your neighbors.

by Lubna Debini

Please help if you can

There are some looming and immediate issues facing the Washington Square Neighborhood on the Bristol Street Widening project. Our neighborhood association and your board and volunteers are charged with working to keep our neighborhood safe, attractive and maintain property values.

Budgets have threatened the execution of the project as planned. Without our intervention, activism and lobbying, WS could be stuck with a poor excuse for a project.

Please add your voice to help your neighborhood negotiate these issues so we have a positive outcome. Email Tom Lutz at president@washington-square.org to add your voice.

Shameless promotion...

We love our advertisers and this issue we have two new ones--**El Pico de Gallo Grill** on 17th and Flower, and our own **Moses Yneges** who lives on Freeman and is a respected personal injury attorney who wants you to know he's ready to help you.

Thanksgiving morning please remember your FREE BREAKFAST TACOS are at El Pico de Gallo Grill starting at 7 a.m. The owners are serious about giving back to the community and thanking us for all the fish tacos, breakfast burritos and chile rellenos we've consumed there over the years. We are lucky to have them so nearby.



Washington Square

P.O. Box 4435



Santa Ana CA 92702

NEIGHBORHOOD ASSOCIATION

It is our volunteer residents who make this a truly outstanding place to live. We are all committed to WSNA and just as committed to having fun. Please ocn

2013 Officers

President	Tom Lutz	836-9110
Vice-President	Javier Garcia	595-8813
Secretary	Laura Garcia	595-8813
Treasurer	Monica Drevon	(949) 500-3678
Board Members:	Javier Garcia	595-8813
	Jean-Louise Jirik	543-9079
	Bob Keenan	835-0473
	Nancy Lutz	836-9110
	Jean Poppa	836-6430

2013 Committee Chairs

Membership	Laura Garcia	836-8128
Volunteer	Diane Morter	814-4326
Hospitality	Lubna Debini	457-0237
Website	David Jirik	543-9079
Newsletter	Jean-Louise Jirik	543-9079
Downtown Link	Wendy Boelter	(949) 375-2485
Com-Link	Jean Poppa	836-6430
Tree	Susan van der Roest	
Bristol Widening	Randy & Tracy Simons	



The Washington Square Vendor Network

Accounting/tax prep.	Alex Schneider	364-5173
Keys & Locksmith	Ivan Rivera	953-6720
General Contractor	Tom Lutz	835-6130
Handyman	Ken Clark	809-6884
Electrician	Andrew Nunez	782-4740
Realtor	Sarah Covarrubias	883-3314
Santa Ana Pony	Brandie Nava	200-5831
Preschool	Denise Davey	543-1813
Professional Audio-Video,	Event and Technology	
Heliotrope Studios	David Jirik	545-0222
Natural pet nutrition	Jean-Louise Jirik	337-0639
State Farm Insurance	Monica Martinez Drevon	966-2679
Wedding Photography	Photography by Ricardo,	
	Ricardo Barrera	836-4041
Yard flags	Rebecca Ortiz	835-5720
Decorative Ironwork	Marco Coronado	852-1363
Flooring, floor repairs	Tuzos Flooring	720-7793
Painting, Home Repair	Zdenek "Dennis" Ostadal	949-609-0939
Piano Instructor	Bethany Campbell	585-1036
Computer Repair-Instruction-Crisis Management		
	Randy Simons	423-0810
Personal Injury Attorney	Moses Yneges	634-3944

These free listings promote business and services provided by Washington Square residents. This list is published to inform you of opportunities to patronize your neighbors.

SELLING *Washington square* FOR OVER 14 YEARS



Sarah Covarrubias

I am committed to this wonderful neighborhood where residents cherish the uniqueness of their homes.



When you hire me to represent you in the buying or selling process, you not only benefit from my local knowledge & experience, but from the support services provided by my expert team specializing in:

GLOBAL EXPOSURE | WORLD CLASS CONNECTIONS
PROFESSIONAL STAGING | TRANSACTION COORDINATION
IN-HOUSE MARKETING & DESIGN | INSURANCE SERVICES | ESCROW
ARCHITECTURAL PHOTOGRAPHY | INNOVATIONS & TECHNOLOGY



714.928.1303 | SARAHCREALTOR@GMAIL.COM | BRE #00911629